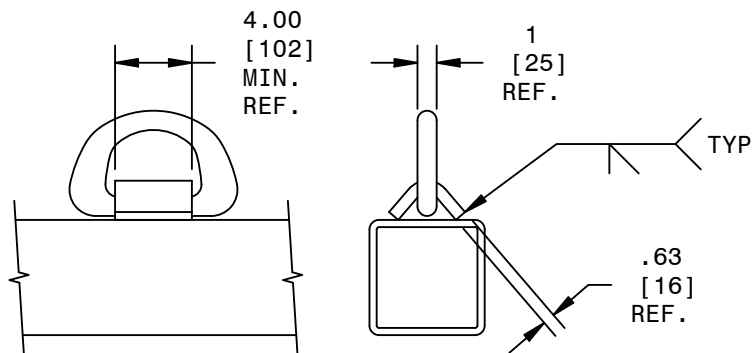


NOTE:

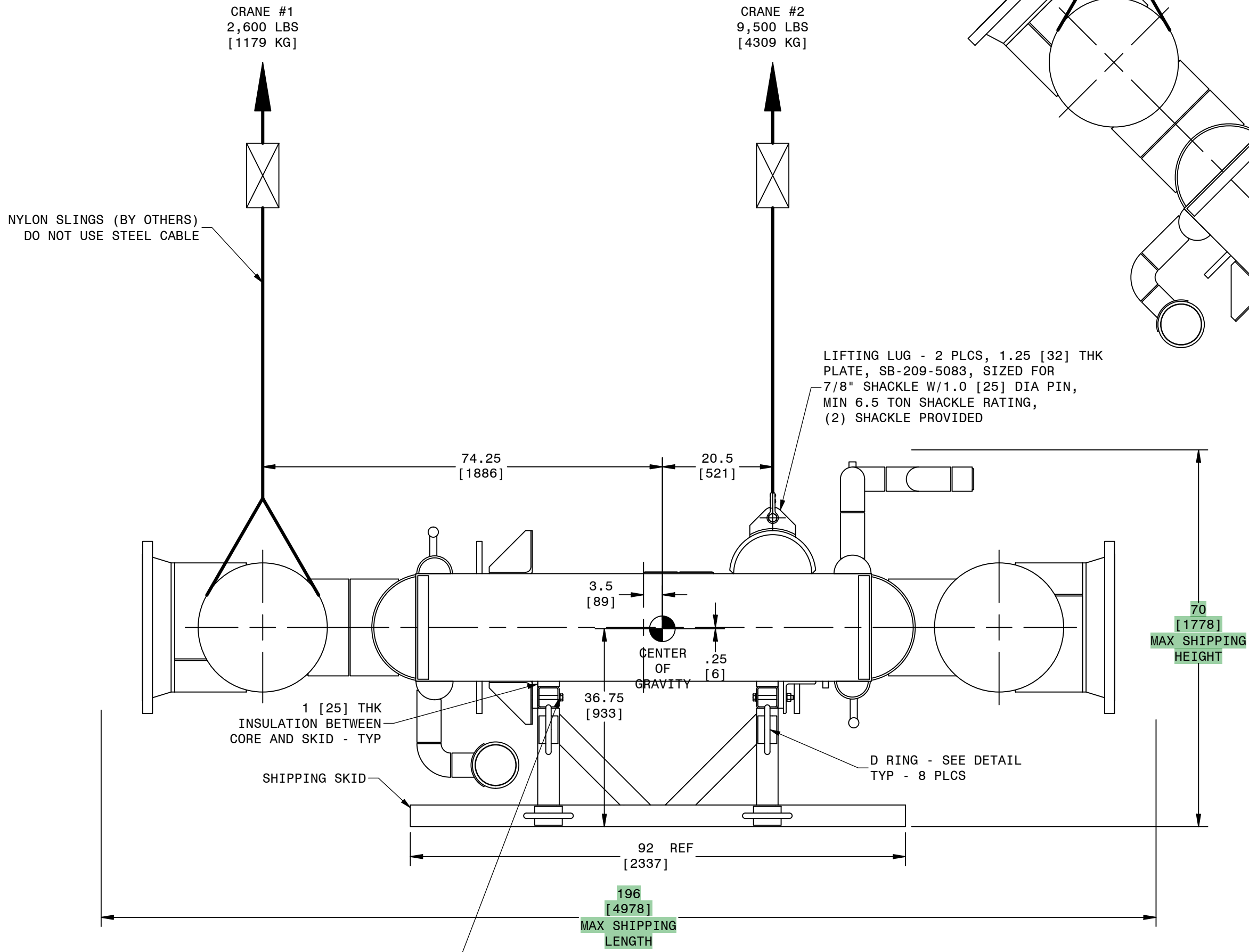
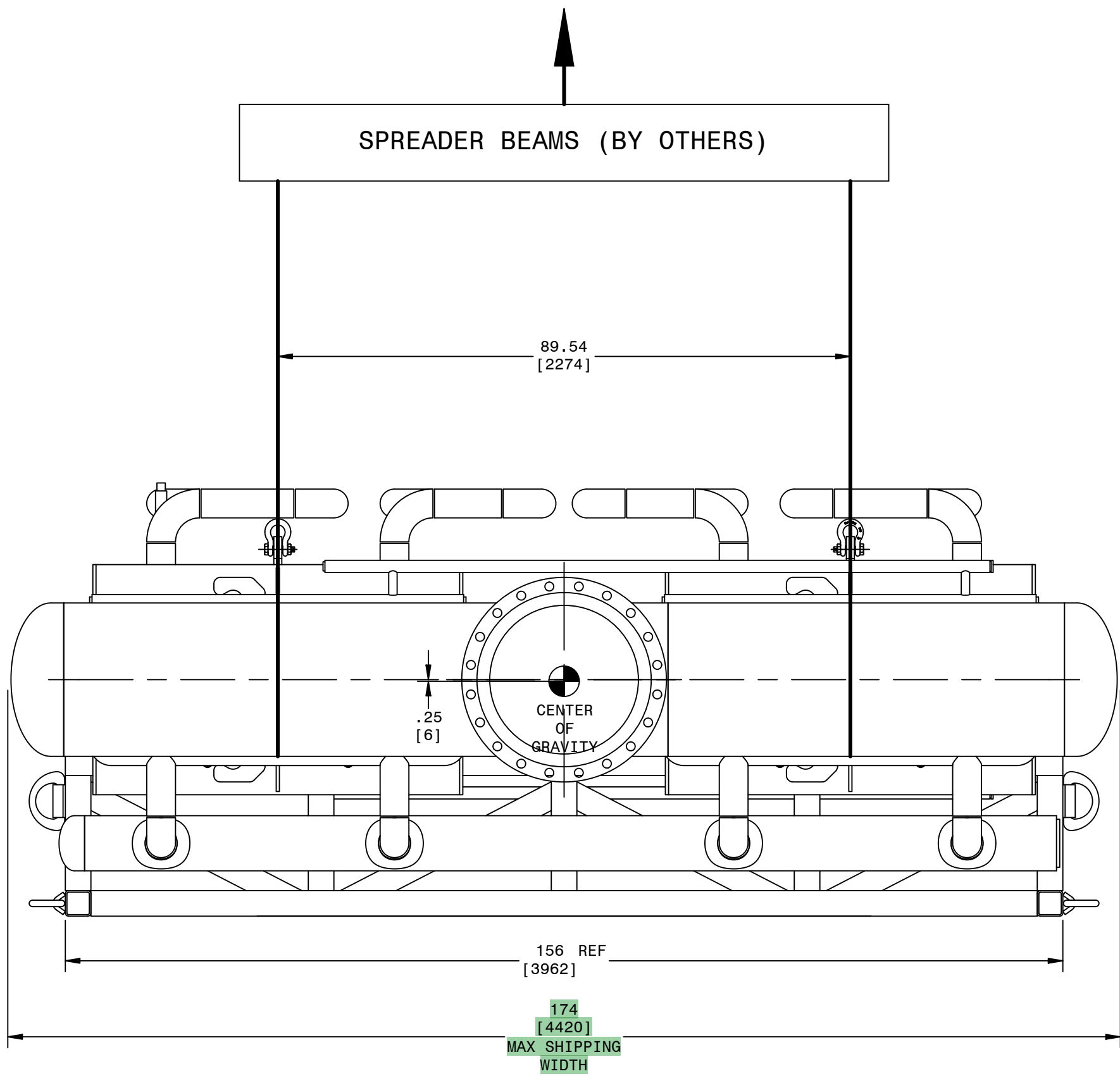
1. TOTAL LOAD DURING LIFT = 12,100 LBS [5488 KG].
(EXCLUDING LIFTING EQUIPMENT AND SKID)
SHIPPING SKID WEIGHT = 1,900 LBS [862 KG]

UPRIGHTING PROCEDURE:

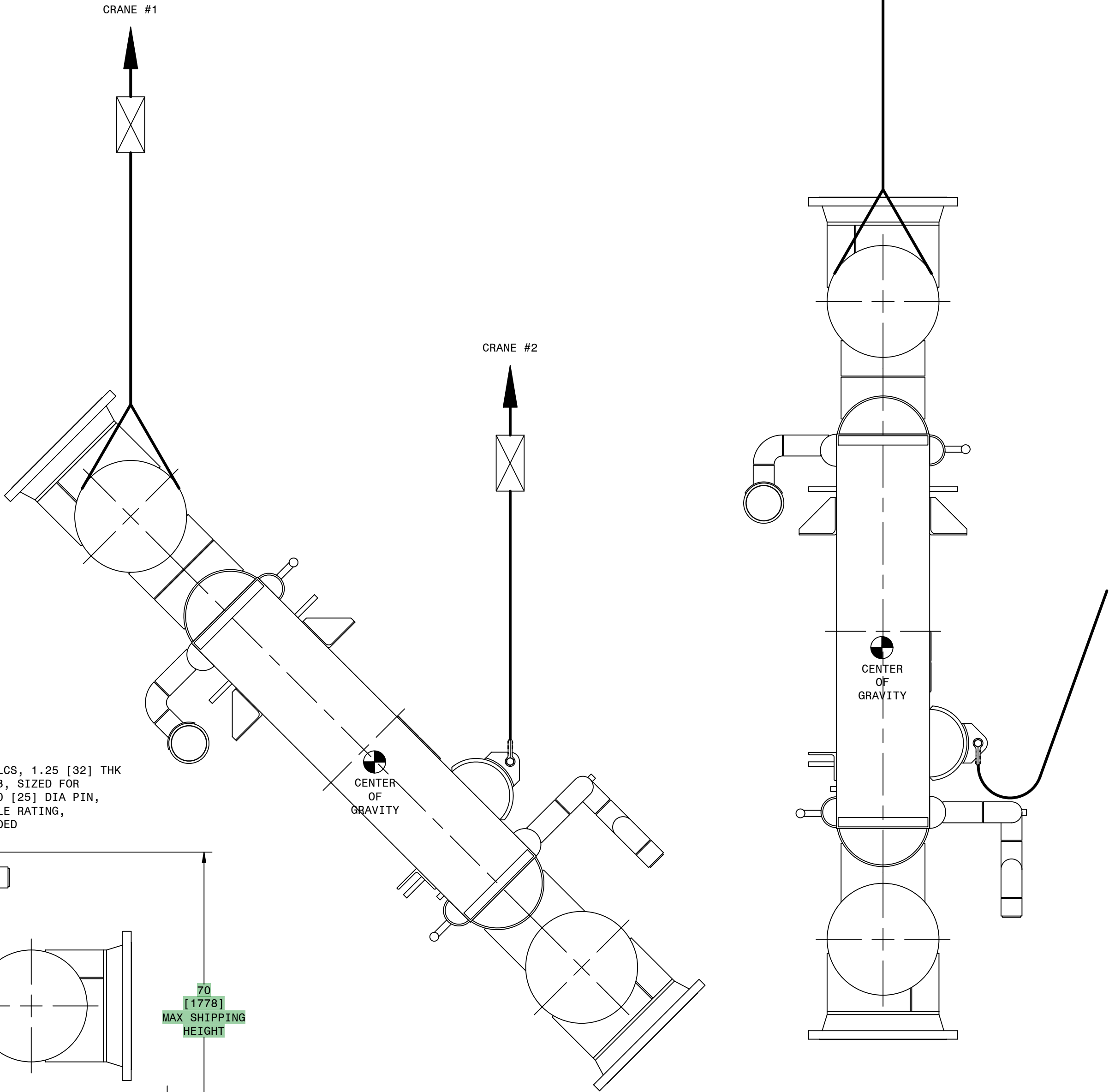
- A. UNBOLT FROM SHIPPING SKID
- B. LIFT UNIT USING SPREADER BEAMS, WITH BOTH CRANES, UNTIL SUFFICIENT CLEARANCE HAS BEEN OBTAINED TO ROTATE.
- C. ROTATE UNIT BY LOWERING CRANE #2 AND RAISING CRANE #1.
- D. LOWER UNIT ONTO SUPPORT STRUCTURE.



D-RING DETAIL
110,000 LBS. [49895] KG
MINIMUM BREAKING LOAD,
(8) PLACES



ATTACH CORE TO SKID USING
.75-10 HEX HEAD BOLTS,
LOCK NUTS, AND WIDE WASHERS
TYP - 8 PLCS
REMOVE BEFORE LIFTING

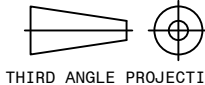



SALES ORDER NO.	ITEM NO.
4176.2	E-111A

A	DRAWING ISSUED.	6/17/2024	DOVAL	KAPPAUF
REV	DESCRIPTION	DATE	BY	APPROVED
REVISION HISTORY				

DR	DOVAL	STD ENGR SPEC
DATE	6/17/2024	11-6.00
CHKD	VUE	
DATE	6/19/2024	
PROD ENG	KAPPAUF	
DATE	6/25/2024	
MFG ENG		
DATE		
WELD ENG		
DATE		

PROPRIETARY AND CONFIDENTIAL	
THIS DOCUMENT CONTAINS PROPRIETARY INFORMATION BELONGING TO CHART ENERGY & CHEMICALS, INC. AND SHALL BE USED ONLY FOR THE PURPOSE FOR WHICH IT WAS SUPPLIED. IT SHALL NOT BE COPIED, REPRODUCED, OR OTHERWISE USED, NOR SHALL SUCH INFORMATION BE FURNISHED IN WHOLE OR IN PART TO OTHERS EXCEPT IN ACCORDANCE WITH THE TERMS OF ANY AGREEMENT UNDER WHICH IT WAS SUPPLIED OR WITH THE PRIOR WRITTEN CONSENT OF CHART ENERGY & CHEMICALS, INC. AND SHALL BE RETURNED UPON REQUEST.	
UNLESS NOTED: DIMENSIONS IN INCHES OR INCHES [MM]	
LEGEND	
○ PART NUMBER (PRODUCTION USE ONLY)	
□ JOINT DETAIL-REF. (PRODUCTION USE ONLY)	
FIN DATA INFORMATION	
Δ DIMENSIONAL REVISION	
D SPECIAL NOTATION	
© 2024 Chart Energy & Chemicals, Inc. All Rights Reserved	



		Chart Energy & Chemicals, Inc. 2191 Ward Ave., La Crosse, WI 54601 USA	
LIFTING INSTRUCTIONS SHIPPING ASSEMBLY			
SIZE D	DWG NO. 20876L	REV. A	